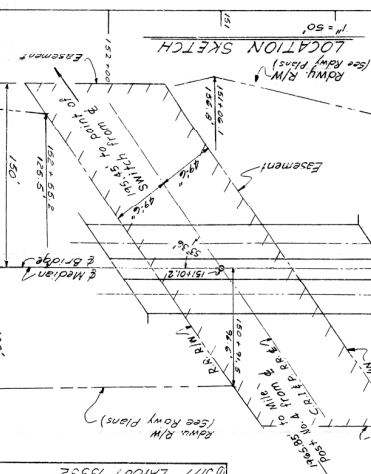


BRIDGE NO. 5177
 DRAWING NO. 15532
 ROUTE 270 SEC. 4
 HOT SPRING COUNTY
 MALVERN-JUNCTION HWY. 51
 C.R. & P. RAILROAD AT STA. 151+01.2
 LAYOUT OF OVERPASS OVER
 EXHIBIT A

FOUNDATION PRESSURE = 4800 lbs. per sq. ft.
 The bottom elev. of the bell footings shall be set
 a minimum of 15' below the ground line and
 into firm clay.

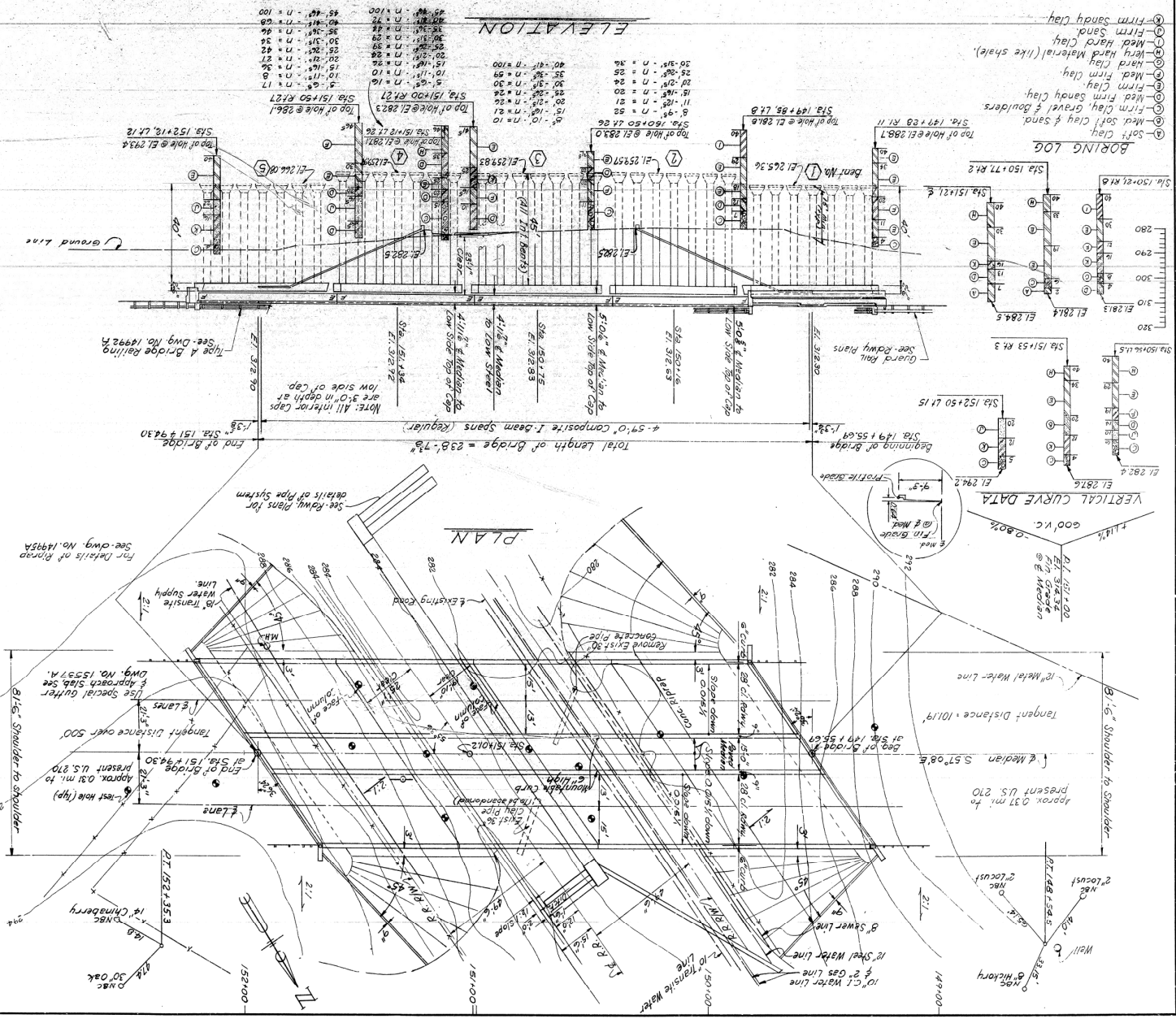
DESIGN SPECIFICATIONS: ARSNO
 1968 and interim specifications
 Unit Stresses: Class S Concrete (w/10) 1,200 psi
 Reinforcing Steel 20,000 psi
 Structural Steel (A-36) 20,000 psi

GENERAL NOTES
 BRANCH MARK - Railroad Spike in Root of 36" Post Box 87' LL. SDO. 152440
 Elevation 297.50.
 Forward corners to be changed 314' unless otherwise noted.
 For details of end bents see DWG. No. 15534/15535
 For details of intermediate bents, see DWG. No. 15537
 For details of superstructure see DWG. No. 15535, 15537 & 15902



DATE	REVISION	BY	CHKD	APPD
6/17/8	6	ARK		
5/1/78	5	ARK		

214



214